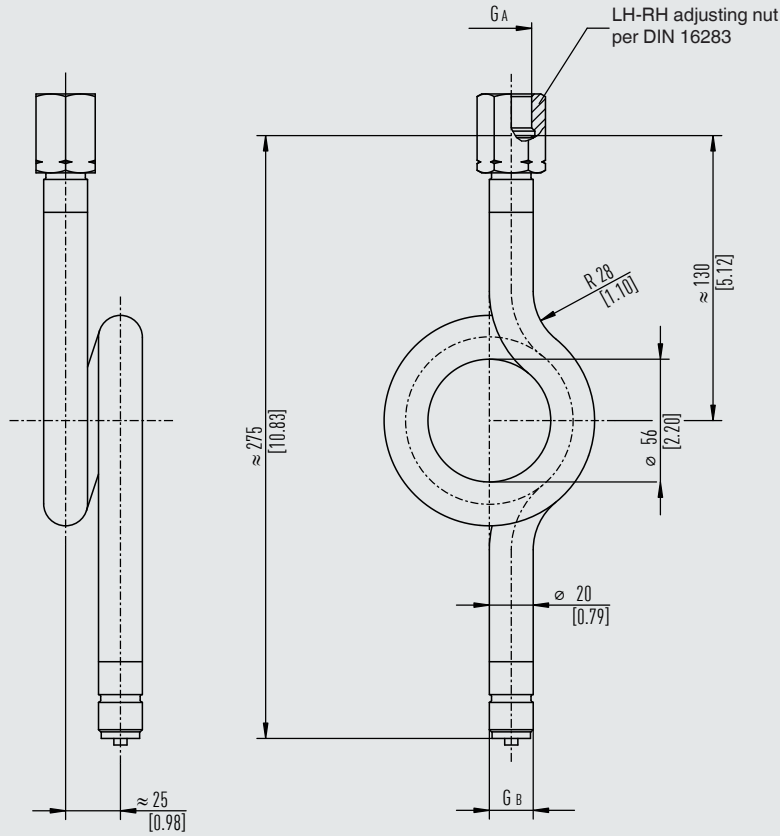
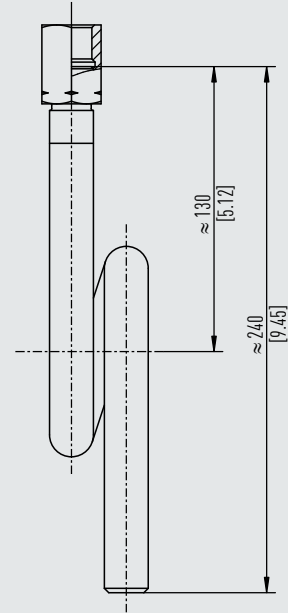


**Trumpet form
Form C**



Form D



Due to the manufacturing process, the pipe dimensions at the bending points are slightly changed.

Version	G _A Instrument connection	G _B Process connection	Max. operating pressure in bar [psi]	Order number			
				Carbon steel, phosphated		Stainless steel 316L	
				Standard	With 3.1 ¹⁾	Standard	With 3.1 ¹⁾
Form C	G ½, LH-RH adjusting nut	G ½ B	160 [2,320]	9091203	2329039	9091238	1323997
Form C	M20 x 1.5, LH-RH adjusting nut	M20 x 1.5	160 [2,320]	On request	14182633	On request	14137620
Form D	G ½, LH-RH adjusting nut	Weld-in, 2 x 45°	160 [2,320]	9091211	1614940	1440497	1614924

1) Including 3.1 inspection certificate per EN 10204, material proof for wetted metal parts